

LINTEL FORM A WINDOW WITH A ROLLER SHUTTER IN THE LINTEL BEAM

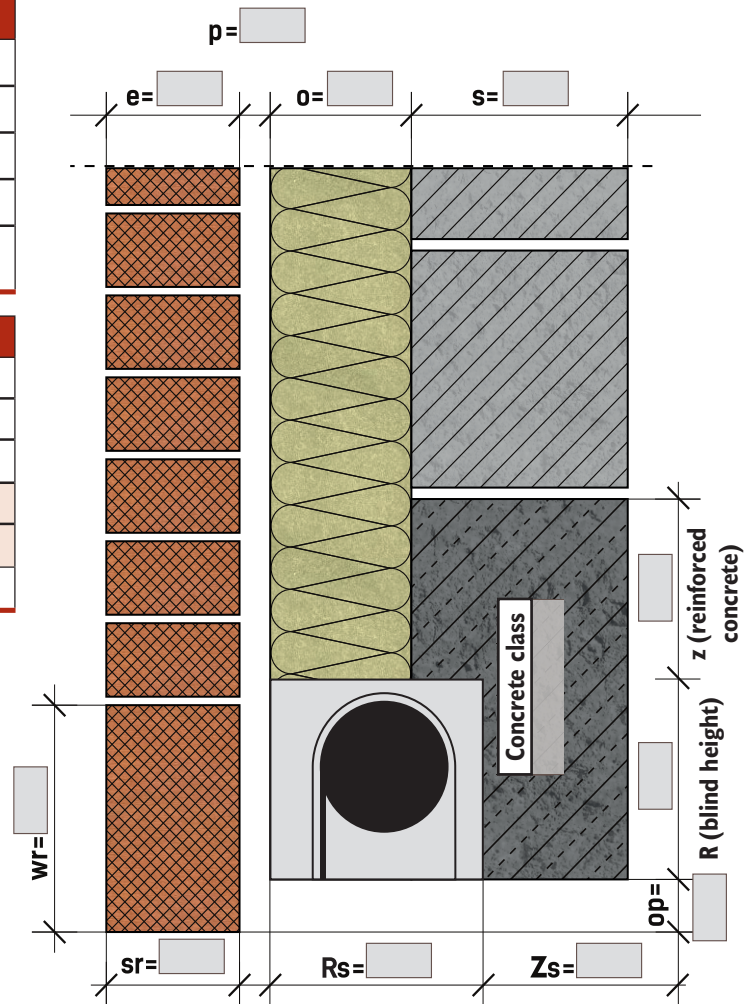
Form Number:

Window no

INVESTMENT DATA	
Investor	<input type="text"/>
Address	<input type="text"/>
phone no.	<input type="text"/>
e-mail	<input type="text"/>
Signature	<input type="text"/>

FAÇADE BRICK				
Class	<input type="text"/>			MPa
Libra	<input type="text"/>			kg/pcs
Perforation	<input type="text"/>			%
Dimensions	<input type="text"/>	x	x	<input type="text"/>
Material	clinker	silicate	ceramics	concrete
Mortar M	<input type="text"/>			

ATTENTION! Please keep the same units of measurement in all dimensions - **mm**, **cm** or **m**



Description	Symbol	Dimension [cm]
facade thickness	e	
warm-up	o	
air void	u	
thickness of the load-bearing wall	s	
reinforced concrete height	z	
roll height	wr	
roll width	sr	
lowering the roller	op	
height above the roller	h	
the width of the blind	Rs	
reinforced concrete width	Zs	
roller blind height	R	

LINTEL FORM

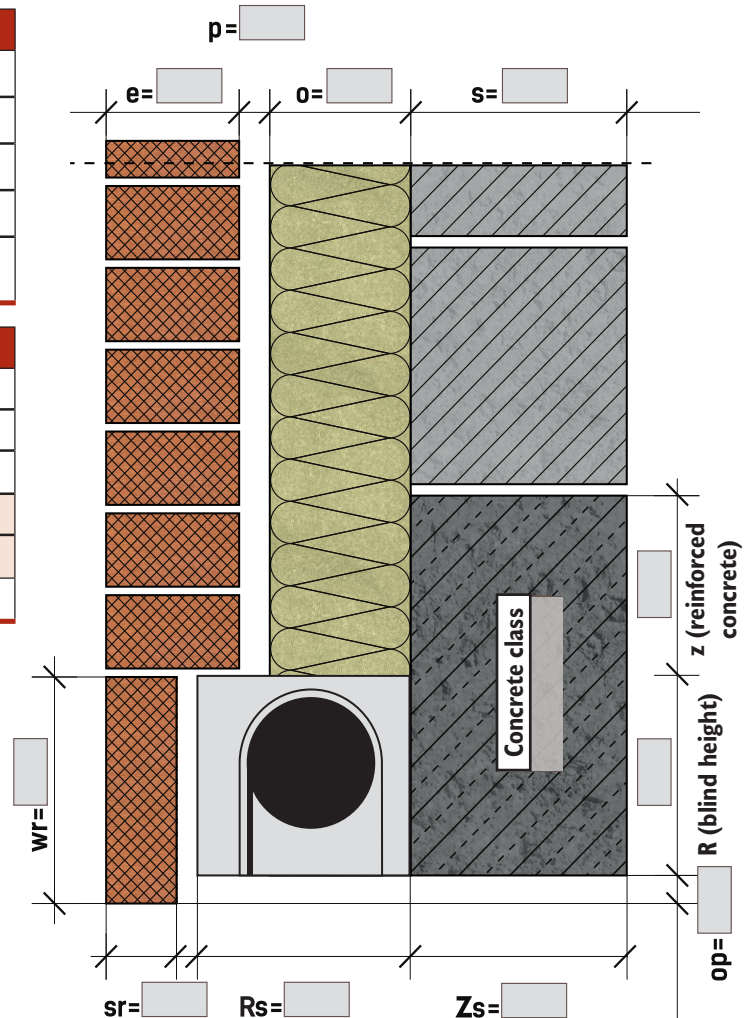
A WINDOW WITH A ROLLER SHUTTER PARTIALLY IN THE FAÇADE

Form Number:

Window no

INVESTMENT DATA	
Investor	<input type="text"/>
Address	<input type="text"/>
phone no.	<input type="text"/>
e-mail	<input type="text"/>
Signature	<input type="text"/>

FAÇADE BRICK				
Class	<input type="text"/>			MPa
Libra	<input type="text"/>			kg/pcs
Perforation	<input type="text"/>			%
Dimensions	<input type="text"/>	x	x	<input type="text"/>
Material	clinker	silicate	ceramics	concrete
Mortar M	<input type="text"/>			



ATTENTION! Please keep the same units of measurement in all dimensions - **mm**, **cm** or **m**

Description	Symbol	Dimension [cm]
facade thickness	e	
warm-up	o	
air void	u	
thickness of the load-bearing wall	s	
reinforced concrete height	z	
roll height	wr	
roll width	sr	
lowering the roller	op	
height above the roller	h	
the width of the blind	Rs	
reinforced concrete width	Zs	
roller blind height	R	

SITUATIONAL CASE OF A LINTEL

A

B

C

D

Needed a view whole wall or photo of the facade with dimensions.

E

F

CORNER Yes

No

Z

External

W

Internal

For lintels with the same cross-section parameters (given on the previous page) provide in the table below the corresponding designation of the situational case from the drawings above and dimensions.

Lintel no	Situational case	Number of identical lintels	fl	L	fp	F1	F	F2	H
1									
2									
3									
4									
5									
6									
7									
8									